

KNOW BEFORE YOU GO

A QUICK REFERENCE GUIDE FOR YOUR SHOWROOM VISIT

DO YOU WANT TO UPDATE YOUR DOOR HARDWARE?

Are you remodeling or building a new home? Whatever your circumstances, Baldwin can help! Due to the nature of customizable options of door hardware, our items are sold through local showrooms, so you have a partner to help guide you with your decisions. Here are a few things that will make your visit to a door hardware showroom more productive. The following information will help your showroom representative specify the perfect Baldwin hardware for your door and design preference.

GENERAL TIPS

- 1 We recommend calling ahead to make an appointment.** *Specifying Baldwin products is a personalized experience and we want to ensure that you get your representative's undivided attention.*
- 2 Plan ahead.** *Your showroom may have a number of of your desired products in stock but, they may need to order items specific to your requirements which may take days or weeks for delivery.*
- 3 Bring inspiration photos** *including ads, brochures, photos or web pages of products or styles you like. You can also print out product dimensions for any Estate handleset you find on baldwinhardware.com to bring with you. Also, please include any photos of your house which show its architectural style.*
- 4 Bring along any blueprints or a door schedule.**
- 5 Please take photos of your door.** *Take photos of the inside, outside and edge of your door and the inside of the door frame (showing the metal strike plate). If are replacing existing hinges, please take a photo of the old ones.*
- 6 Let your sales associate know** *if any of your doors have glass, molding or insets.*

MEASUREMENTS

If you are buying hardware for more than one door, please provide a count of how many doors by type.



PASSAGE
(non-locking knob or lever set)



PRIVACY
(locking knob or lever – no key)



KEYED
(locking knob, lever, entrance set or deadbolt for security)

DOOR PREPARATION



Pre-Drilled with One or Two Holes
(prepared for tubular locks)

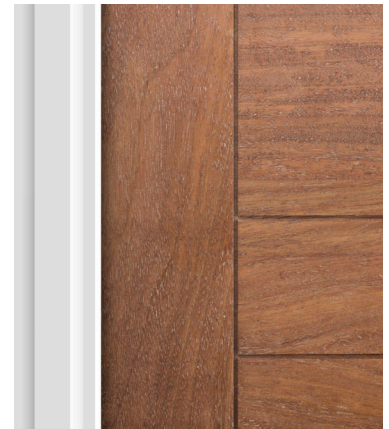
The tubular style lock is commonly found on all types of doors, most notably interior residential and office doors.

It boasts excellent security for most applications and is usually quite easy to install and replace if standard bore holes are already cut in the door. Make sure your new latch has the correct backset length (the measurement from the edge of the door to the center of the bore hole), and just follow the installation instructions. The most popular types of tubular style locks are single cylinder and double cylinder.



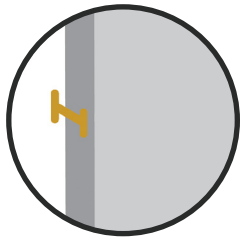
Pre-drilled with a Pocket in the Side of the Door
(prepared for mortise locks)

A mortise style lock is the most secure form of an entry set. The reason? A special cut in the door allows a longer and thicker mortise to slide into the pocket in the door itself, providing superior protection. These types of locks require special door preparation, so if your door isn't currently cut to fit this kind of lock, you (or a professional installer) will need to use a mortise saw to cut into the door so the lock fits properly. Take note that not all mortise locks have the same dimensions. So prior to any door alteration, take careful measurements.



Blank Door
(unprepared door with no holes or pockets pre-drilled for locks)

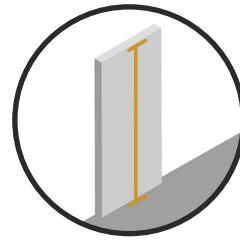
MEASUREMENTS



DOOR THICKNESS

Measure the door from the inside to the outside.

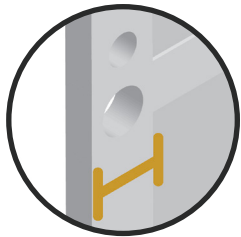
For example, many interior doors measure 1-3/8" thick and the industry standard for front doors is 1-3/4". If you have a custom door that is thicker, don't worry. Your representative can order longer components that connect the hardware from one side of the door to the other.



DOOR HEIGHT

Measure the door from the bottom sill to the top of the door.

Standard door heights are 6' 8" but, can be higher. This measurement is important if you are planning to purchase new hinges.



STILE WIDTH

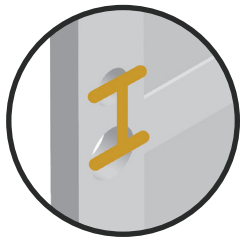
Measure from the edge of the door to the edge of any molding, raised panels or glass in place on the door.

Narrow stiles (4" or less) may limit some of the backset or trim options for your knob or lever.



BACKSET

This is the distance from the edge of the door to the center of the knob or shank on the lever.



CENTER TO CENTER

Measure from the center of the top hole (deadbolt) to the center of the bottom hole (latch).

This measure is needed when shopping for exterior door handle sets or on interior doors where you have two pre-drilled holes.



Tip: Measure, measure, measure. And then go back and check your measurements.

DOOR HANDING

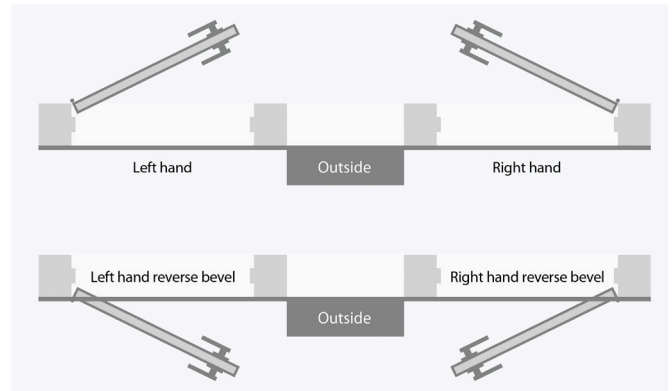
This is a term used to describe which way your door is hinged. To determine the handing of a door, stand on the side of the door from which you gain access to the room. (exterior door = street side; room door = hall side; closet door = room side; other doors = side where hinges are not visible). Face the door. Notice which side the hinges are on.

Left Handed: hinges on left, door swings into the room

Left Handed Reverse Bevel: hinges on left, door swings out of the room

Right Handed: hinges on right, door swings into the room

Right Handed Reverse Bevel: hinges on right, door swings out of the room



HOW TO ORDER A LA CARTE

Baldwin Estate A La Carte allows you to create any custom design combination that you can imagine. Choose any knob, lever and rose combination in any Baldwin Estate finishes. Customization is available down to the finite details of strike length, door thickness, UL kit and faceplate width. When building A La Carte product, it is essential to consider all components needed to create a complete set.

Critical components to create a complete functioning lockset when ordering via A La Carte are:



KNOB OR LEVERS

- Select a pair, or an individual knob or lever depending on function or if looking to create a split style or finish



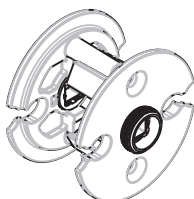
ROSES

- Select from Entry, Passage, Privacy, Dummy full or half sets
- Rose diameters vary by style (diameter is driven by door prep)

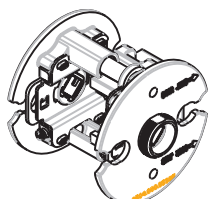


LATCH

- Passage or Privacy
- 2.375" or 2.75" backset (backset is driven by door prep)
- Includes t-strike and standard spindle to support 1.75" thick door
- Offered in both 1" wide faceplate or 1.125" wide faceplate



Standard Adaptor



For use with heavier levers

ADAPTOR

- Only required for a 2.125 standard door prep
- Select either a knob strength adaptor or spring assisted adaptor for heavier levers
- NOTE: Adaptors accommodate 1-3/8" and 1-3/4" door thickness.

MIX & MATCH EXAMPLE

With Baldwin, you can customize your door hardware. Mix any Estate™ knob or lever with any rose. You can even change out the knob or lever on any handleset or entry set to fit your taste.



DIFFERENT ROSES CAN CREATE UNIQUE LOOKS FOR THE SAME KNOB



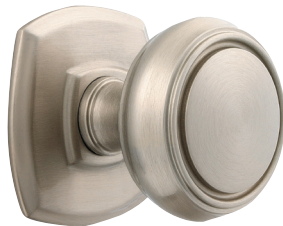
5068 Knob
Shown w/ 5038 Rose



5068 Knob
Shown w/ 5002 Rose



5068 Knob
Shown w/ 5076 Rose



5068 Knob
Shown w/ 5058 Rose



5068 Knob
Shown w/ 5070 Rose